

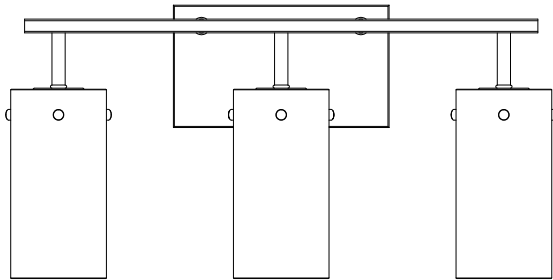
WARRANTY

If this fixture does not last for 5 years (based on 3 hours per day / 7 days per week) return fixture, proof of purchase and your name and address to GE Lighting, a Savant company, Product Service Dept., 1975 Noble Road, Cleveland, OH 44112 for a replacement. FIXTURE REPLACEMENT IS SAVANT TECHNOLOGY LLC'S SOLE WARRANTY OBLIGATION. INCIDENTAL AND CONSEQUENTIAL DAMAGES ARE EXCLUDED. This warranty does not cover the cost of installation, removal or reinstallation, or damage resulting from misuse, abuse, or damage from improper wiring or installation. You are solely responsible for (and Savant Technology LLC disclaims) any and all loss, liability, or damages, including to your wiring, electricity, home, product, product peripherals, computer, mobile device, and all other items and pets in your home, resulting from your use of the product. Some states do not allow the exclusion or limitation of incidental or consequential damages, so the above exclusion may not apply to you. This warranty gives you specific legal rights and you may also have other rights which vary from location to location.



Installation Guide

Mentor 3 Light Vanity



GE Lighting, a Savant company • 1-800-435-4448 • www.gelighting.com

GE IS A TRADEMARK OF GENERAL ELECTRIC COMPANY. USED UNDER TRADEMARK LICENSE. ©2022 GE LIGHTING, A SAVANT COMPANY

INFORMATION PROVIDED IS SUBJECT TO CHANGE WITHOUT NOTICE. ALL VALUES ARE DESIGN OR TYPICAL VALUES WHEN MEASURED UNDER LABORATORY CONDITIONS.

PK-00109483-1

www.gelighting.com
The GE brand and logo are trademarks of the General Electric Company.
©2022 GE Lighting, a Savant company. Information provided is subject to change without notice.
All values are design or typical values when measured under laboratory conditions.

PRODUCT COVERED

| Model | Input voltage (Vac, Hz) |
|-------------|----------------------------|
| VAN3LDMBNMT | 120,60 |

LIGHT SOURCE

| Recommended Bulb | Maximum Bulb Wattage | Socket Type |
|-------------------|----------------------|-------------|
| A19(Not Included) | 60W | E26 |



BEFORE YOU BEGIN
Read these instructions completely and carefully.

WARNING

- Risk of fire or electric shock: Wall light installation requires knowledge of luminares electrical systems. If not qualified, do not attempt installation. Contact a qualified electrician.
- Consult a qualified electrician to ensure ensure correct connection to branch circuit. This product must be installed in accordance with the applicable installation code by a person familiar with the construction and operation of the product and the hazards involved.
- These products are intended to be used in dry or damp locations.
- Min 90°C (194°F) supply conductors suitable for operation in an ambient not exceeding 40°C (104°F).

REPARE ELECTRICAL WIRING

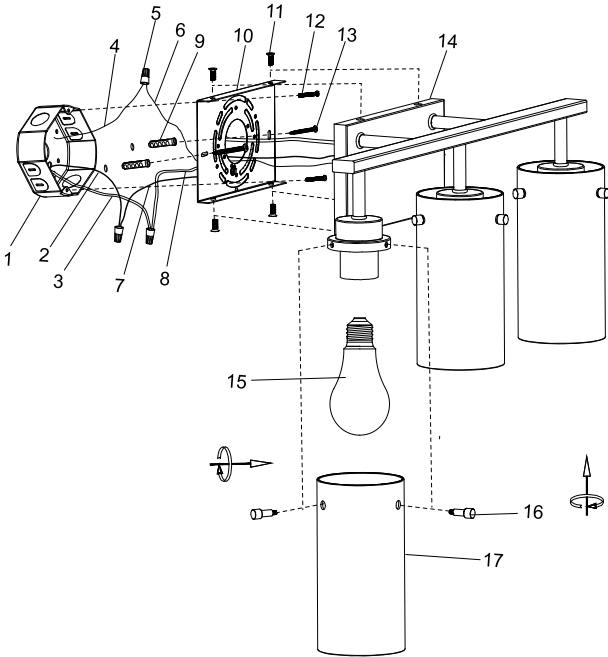


Electrical Requirements
The fixture must be supplied with 120VAC 60Hz.



Grounding Instructions
The grounding and bonding of the overall system shall b in accordance with National Electric Code(NEC) and loca

PACKAGE CONTENTS



1. OULET BOX (NOT INCLUDED)

2. BLACK SUPPLY WIRE (NOT INCLUDED)

3. WHITE SUPPLY WIRE (NOT INCLUDED)

4. POWER SUPPLY GROUND WIRE (NOT INCLUDED)

5. P4 WIRE NUT × 3

6. GROUND FIXTURE WIRE

7. BLACK FIXTURE WIRE

8. WHITE FIXTURE WIRE

9. DRYWALL ANCHOR × 2
10. MOUNTING BRACKET

11. CANOPY SCREW × 4

12. MOUNTING BRACKET SCREW × 2

13. SELF - TAPPING SCREW × 2

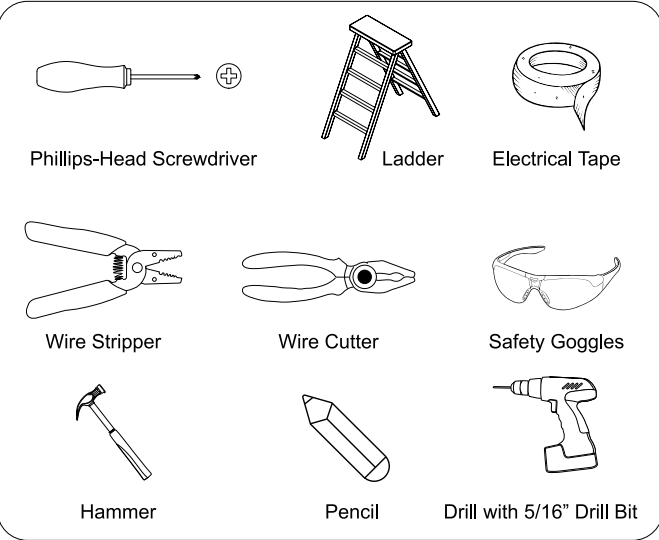
14. FIXTURE CANOPY

15. BULB × 3 (NOT INCLUDED)

16. GLASS SHADE SCREW × 9

17. GLASS SHADE × 3

TOOLS REQUIRED

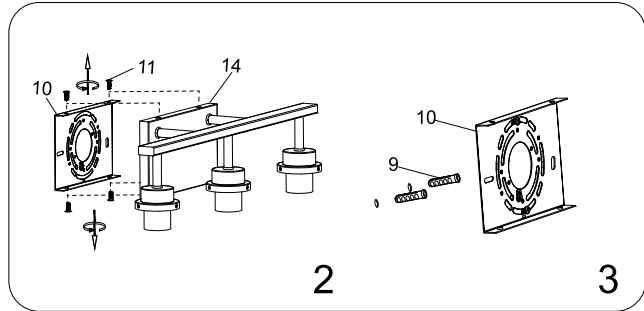


INSTALLATION

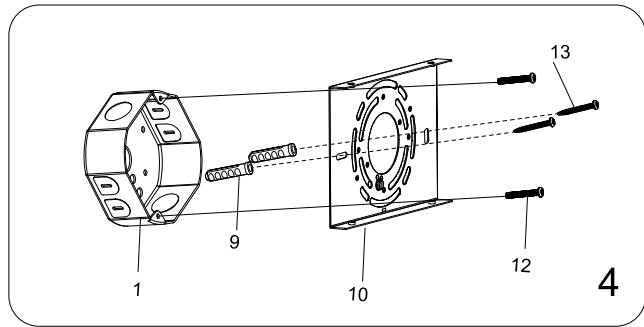
Remove the fixture and the mounting package from the box and make sure that no parts are missing by referencing the illustrations on the installation instructions.

Caution: Turn off the main power at the circuit breaker before installing the fixture. Failure to disconnect power supply prior to installation may result in possible shock or death.

1. Remove existing fixture and disconnect all electrical wiring.
2. Remove mounting bracket[10] from fixture canopy[14] by removing canopy screws[11].
3. Mark two hole locations on the wall that align with hole distance in mounting bracket[10]. Drill two holes with 5/16" size drill bit at the marked locations. Insert drywall anchors[9] into each drilled mounting hole.

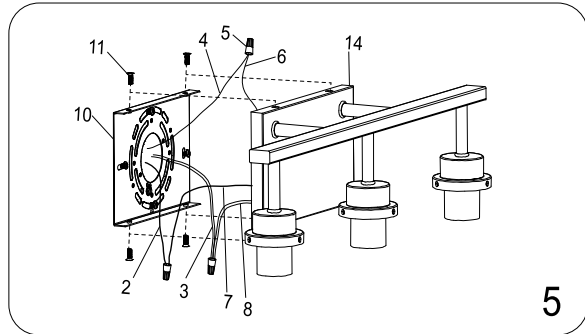


4. Place mounting bracket[10] onto outlet box[1], fix mounting bracket[10] tightly by using two mounting bracket screws[12]. Insert self-tapping screws[13] into drywall anchors[9] to ensure that mounting bracket[10] is tight against the wall.



5. Connect black supply wire[2] to black fixture wire[7] and connect white supply wire[3] to white fixture wire[8] by using P4 wire nuts[5]. Connect ground fixture wire[6] at the top of the fixture metal body[14] to power supply ground wire[4] from outlet box[1]. Wrap P4 wire nuts[5] with electrical tape for a more secure connection. Carefully tuck wires back into the outlet box[1]. Do not get wires pinched between the wall and canopy.

6. Attach fixture canopy[14] onto mounting bracket[10] by canopy screws[11] previously removed in step 2. Tighten to secure fixture to the wall. Note: Fixture can be mounted in the up or down position.



7. Screw recommended bulb[15] into socket. Align holes on the fixture metal body with the holes on the glass shade[17]. Secure glass with glass shade screws[16]. Do not over tighten.

